



# TOYOTA

## Service Bulletin

Section : Engine

Ref. No. : EG-6005

Date : Feb.,2006

Page : 1 of 2

Area Application : Europe

Model Name : COROLLA VERSO, AVENSIS

Model Code : CDT250, CUR10

### **Subject : ENGINE DIFFICULT TO START IN HOT CONDITION**

This Service Bulletin is to inform you of the field fix and production improvement for the subject concern.

#### **DESCRIPTION OF PHENOMENON:**

Engine has difficulty to start or does not start at all in warm condition.

Starting engine problem cannot be detected in cold condition.

#### **PRODUCTION IMPROVEMENT:**

Starter motor assembly process has changed to avoid:

- Internal misalignment
- Shaft scratches

#### **Discrimination mark:**

Possible discrimination is production date of the starter assy: (29/07/2004)

This date can be found on the parts label

Example: 07F29= 29 July 2004

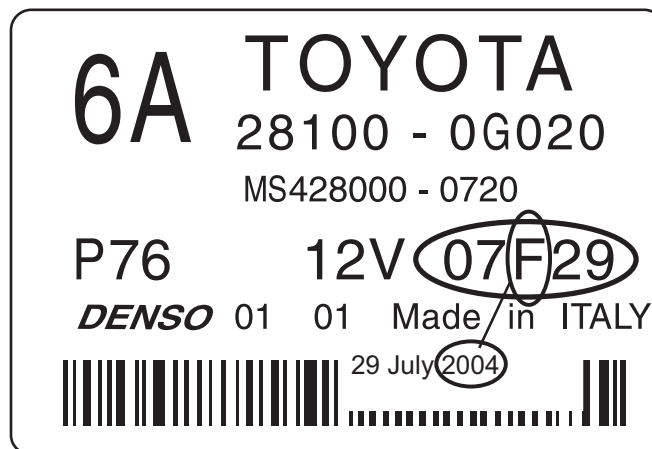
E=2003

F=2004

G=2005

H=2006

**Discrimination mark:**



E = 2003

F = 2004

G = 2005

H = 2006

N

A144028E01

# Service Bulletin

Ref. No. : EG-6005

Page : 2 of 2

## FIELD FIX REPAIR PROCEDURE:

In order to solve this problem, please replace starter assy by a new one.

### Part No. Information :

Prev. Part No	New Part No.	New Part Name	Qty
28100-0G020	28100-0G020	Starter Assy	1

### Production Effective :

Model	Implementation date	Cut-off frame no.
Avensis	01/08/05	CDT250-E131955
Corolla Verso	29/07/05	CUR10- R059508